

TRUE POSITION LOCATORS

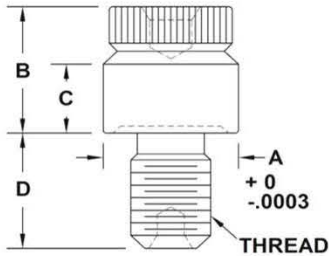
TRU-POS™



		PART NUMBER	THREAD	A	B	C	D
<p>UNIFIED SERIES</p>		1TP0080	0 - 80 UNF	.1700	.25	.16	.12
		1TP0164	1 - 64 UNC	.1700	.25	.16	.12
		1TP0172	1 - 72 UNF	.1700	.25	.16	.12
		1TP0256	2 - 56 UNC	.1700	.25	.17	.15
		1TP0264	2 - 64 UNF	.1700	.25	.17	.15
		1TP0348	3 - 48 UNC	.2000	.25	.17	.15
		1TP0356	3 - 56 UNF	.2000	.25	.17	.15
		1TP0440	4 - 40 UNC	.2000	.25	.17	.15
		1TP0448	4 - 48 UNF	.2000	.25	.17	.15
		1TP0540	5 - 40 UNC	.2000	.25	.17	.15
		1TP0544	5 - 44 UNF	.2000	.25	.17	.15
		1TP0632	6 - 32 UNC	.2500	.25	.17	.18
		1TP0640	6 - 40 UNF	.2500	.25	.17	.18
		1TP0648	6 - 48 UNS	.2500	.25	.17	.18
		1TP0832	8 - 32 UNC	.2500	.35	.21	.18
		1TP0836	8 - 36 UNF	.2500	.35	.21	.18
		1TP0840	8 - 40 UNS	.2500	.35	.21	.18
		1TP1024	10 - 24 UNC	.3100	.35	.21	.20
		1TP1028	10 - 28 UNS	.3100	.35	.21	.20
		1TP1032	10 - 32 UNF	.3100	.35	.21	.20
		1TP1036	10 - 36 UNS	.3100	.35	.21	.20
		1TP1048	10 - 48 UNS	.3100	.35	.21	.20
		1TP1224	12 - 24 UNC	.3600	.38	.23	.22
		1TP1228	12 - 28 UNF	.3600	.38	.23	.22
		1TP1232	12 - 32 UNEF	.3600	.38	.23	.22
		1TP1764	11/64 - 64 UNS	.3100	.35	.21	.20
		1TP2520	1/4 - 20 UNC	.4000	.40	.25	.25
		1TP2524	1/4 - 24 UNS	.4000	.40	.25	.25
		1TP2528	1/4 - 28 UNF	.4000	.40	.25	.25
		1TP2532	1/4 - 32 UNEF	.4000	.40	.25	.25
		1TP2536	1/4 - 36 UNS	.4000	.40	.25	.25
		1TP2540	1/4 - 40 UNS	.4000	.40	.25	.25
		1TP3118	5/16 - 18 UNC	.4000	.40	.25	.25
1TP3120	5/16 - 20 UN	.4000	.40	.25	.25		
1TP3124	5/16 - 24 UNF	.4000	.40	.25	.25		
1TP3128	5/16 - 28 UN	.4000	.40	.25	.25		
1TP3132	5/16 - 32 UNEF	.4000	.40	.25	.25		
1TP3424	11/32 - 24 UNS	.4500	.45	.30	.30		
1TP3432	11/32 - 32 UNS	.4500	.45	.30	.28		
1TP3716	3/8 - 16 UNC	.5000	.50	.33	.30		
1TP3718	3/8 - 18 UNS	.5000	.50	.33	.30		
1TP3720	3/8 - 20 UN	.5000	.50	.33	.30		
1TP3724	3/8 - 24 UNF	.5000	.50	.33	.30		
1TP3728	3/8 - 28 UN	.5000	.50	.33	.30		

Continued on next page

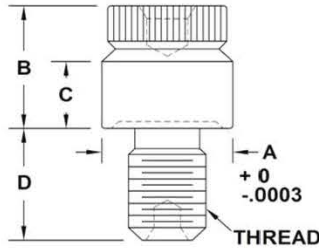
**UNIFIED
SERIES
(CONTINUED)**



	PART NUMBER	THREAD	A	B	C	D
	1TP3732	3/8 - 32 UNEF	.5000	.50	.33	.30
	1TP3756	3/8 - 56 UN	.5000	.50	.33	.30
	1TP4314	7/16 - 14 UNC	.5500	.50	.33	.35
	1TP4320	7/16 - 20 UNF	.5500	.50	.33	.35
	1TP4324	7/16 - 24 UNS	.5500	.50	.33	.35
	1TP4332	7/16 - 32 UN	.5500	.50	.33	.35
	1TP5013	1/2 - 13 UNC	.6200	.50	.33	.40
	1TP5020	1/2 - 20 UNF	.6200	.50	.33	.40
	1TP5028	1/2 - 28 UNEF	.6200	.50	.33	.40
	1TP5032	1/2 - 32 UN	.6200	.50	.33	.40
	1TP5612	9/16 - 12 UNC	.6800	.50	.33	.45
	1TP5618	9/16 - 18 UNF	.6800	.50	.33	.45
	1TP5620	9/16 - 20 UN	.6800	.50	.33	.45
	1TP5624	9/16 - 24 UNEF	.6800	.50	.33	.45
	1TP5632	9/16 - 32 UN	.6800	.50	.33	.45
	1TP6211	5/8 - 11 UNC	.7500	.60	.43	.40
	1TP6216	5/8 - 16 UN	.7500	.60	.43	.40
	1TP6218	5/8 - 18 UNF	.7500	.60	.43	.40
	1TP6220	5/8 - 20 UN	.7500	.60	.43	.40
	1TP6224	5/8 - 24 UNEF	.7500	.60	.43	.40
	1TP6232	5/8 - 32 UN	.7500	.60	.43	.40
	1TP6811	11/16 - 11 UNC	.8700	.60	.43	.50
	1TP6816	11/16 - 16 UN	.8700	.60	.43	.50
	1TP6820	11/16 - 20 UN	.8700	.60	.43	.50
	1TP6824	11/16 - 24 UNEF	.8700	.60	.43	.50
	1TP6832	11/16 - 32 UN	.8700	.60	.43	.50
	1TP7510	3/4 - 10 UNC	.8700	.60	.43	.50
	1TP7516	3/4 - 16 UNF	.8700	.60	.43	.50
	1TP7518	3/4 - 18 UNS	.8700	.60	.43	.50
	1TP7520	3/4 - 20 UNEF	.8700	.60	.43	.50
	1TP7524	3/4 - 24 UNS	.8700	.60	.43	.50
	1TP7528	3/4 - 28 UN	.8700	.60	.43	.50
	1TP8116	13/16 - 16 UNF	.9300	.60	.43	.50
	1TP8120	13/16 - 20 UNEF	.9300	.60	.43	.50
	1TP8709	7/8 - 9 UNC	1.0000	.60	.43	.50
	1TP8714	7/8 - 14 UNF	1.0000	.60	.43	.50
	1TP8716	7/8 - 16 UN	1.0000	.60	.43	.50
	1TP8718	7/8 - 18 UNS	1.0000	.60	.43	.50
	1TP8720	7/8 - 20 UNEF	1.0000	.60	.43	.50
	1TP8728	7/8 - 28 UN	1.0000	.60	.43	.50
	1TP8732	7/8 - 32 UN	1.0000	.60	.43	.50
	1TP9309	15/16 - 9 UNS	1.1000	.60	.43	.50
	1TP9312	15/16 - 12 UN	1.1000	.60	.43	.50
	1TP9316	15/16 - 16 UN	1.1000	.60	.43	.50
	1TP9320	15/16 - 20 UNEF	1.1000	.60	.43	.50
	1TP10008	1" - 8 UNC	1.2000	.80	.60	.60
	1TP10012	1" - 12 UNF	1.2000	.80	.60	.60
	1TP10014	1" - 14 UNS	1.2000	.80	.60	.60
	1TP10016	1" - 16 UN	1.2000	.80	.60	.60
	1TP10020	1" - 20 UNEF	1.2000	.80	.60	.60
	1TP10028	1" - 28 UN	1.2000	.80	.60	.60

Continued on next page

**UNIFIED
SERIES
(CONTINUED)**



	PART NUMBER	THREAD	A	B	C	D
	1TP1.0612	1-1/16 - 12 UN	1.2400	.80	.60	.60
	1TP1.0616	1-1/16 - 16 UN	1.2400	.80	.60	.60
	1TP1.0618	1-1/16 - 18 UNEF	1.2400	.80	.60	.60
	1TP1.0620	1-1/16 - 20 UN	1.2400	.80	.60	.60
	1TP1.1207	1-1/8 - 7 UNC	1.3200	.90	.65	.80
	1TP1.1208	1-1/8 - 8 UN	1.3200	.90	.65	.80
	1TP1.1212	1-1/8 - 12 UNF	1.3200	.90	.65	.80
	1TP1.1216	1-1/8 - 16 UN	1.3200	.90	.65	.80
	1TP1.1218	1-1/8 - 18 UNEF	1.3200	.90	.65	.80
	1TP1.1812	1-3/16 - 12 UN	1.3800	1.00	.70	.83
	1TP1.1816	1-3/16 - 16 UN	1.3800	1.00	.70	.83
	1TP1.1818	1-3/16 - 18 UNEF	1.3800	1.00	.70	.83
	1TP1.1820	1-3/16 - 20 UN	1.3800	1.00	.70	.83
	1TP1.1824	1-3/16 - 24 UN	1.3800	1.00	.70	.83
	1TP1.2507	1-1/4 - 7 UNC	1.4500	1.06	.70	.90
	1TP1.2508	1-1/4 - 8 UN	1.4500	1.06	.70	.90
	1TP1.2512	1-1/4 - 12 UNF	1.4500	1.06	.70	.90
	1TP1.2518	1-1/4 - 18 UNEF	1.4500	1.06	.70	.90
	1TP1.2520	1-1/4 - 20 UN	1.4500	1.06	.70	.90
	1TP1.3112	1-5/16 - 12 UN	1.5000	1.06	.70	.90
	1TP1.3116	1-5/16 - 16 UN	1.5000	1.06	.70	.90
	1TP1.3118	1-5/16 - 18 UNEF	1.5000	1.06	.70	.90
	1TP1.3120	1-5/16 - 20 UN	1.5000	1.06	.70	.90
	1TP1.3706	1-3/8 - 6 UN	1.5500	1.06	.70	.90
	1TP1.3708	1-3/8 - 8 UN	1.5500	1.06	.70	.90
	1TP1.3712	1-3/8 - 12 UNF	1.5500	1.06	.70	.90
	1TP1.3716	1-3/8 - 16 UN	1.5500	1.06	.70	.90
	1TP1.3718	1-3/8 - 18 UNEF	1.5500	1.06	.70	.90
	1TP1.3728	1-3/8 - 28 UN	1.5500	1.06	.70	.90
	1TP1.4316	1-7/16 - 16 UN	1.6400	1.08	.70	.90
	1TP1.4318	1-7/16 - 18 UNEF	1.6400	1.08	.70	.90
	1TP1.5006	1-1/2 - 6 UNC	1.7200	1.10	.70	.90
	1TP1.5008	1-1/2 - 8 UN	1.7200	1.10	.70	.90
	1TP1.5012	1-1/2 - 12 UNF	1.7200	1.10	.70	.90
	1TP1.5016	1-1/2 - 16 UN	1.7200	1.10	.70	.90
	1TP1.5018	1-1/2 - 18 UNEF	1.7200	1.10	.70	.90
	1TP1.5616	1-9/16 - 16 UN	1.7800	1.10	.70	.90
	1TP1.5620	1-9/16 - 20 UN	1.7800	1.10	.70	.90
	1TP1.6208	1-5/8 - 8 UN	1.8500	1.10	.70	.90
	1TP1.6212	1-5/8 - 12 UN	1.8500	1.10	.70	.90
	1TP1.6216	1-5/8 - 16 UN	1.8500	1.10	.70	.90
	1TP1.6218	1-5/8 - 18 UNEF	1.8500	1.10	.70	.90
	1TP1.7512	1-3/4 - 12 UN	2.0000	1.10	.70	.90
	1TP1.7518	1-3/4 - 18 UNS	2.0000	1.10	.70	.90
	1TP1.8116	1-13/16 - 16 UN	2.0500	1.10	.70	.90
	1TP1.8712	1-7/8 - 12 UNS	2.1000	1.10	.70	.90
	1TP2.0008	2 - 8 UN	2.2200	1.20	.80	.90
	1TP2.0016	2 - 16 UN	2.2200	1.20	.80	.90
	1TP2.2512	2-1/4 - 12 UN	2.4700	1.40	1.00	2.40
	1TP2.5012	2-1/2 - 12 UN	2.7200	1.60	1.20	1.25
	1TP3.0008	3 - 8 UN	3.2200	1.60	1.20	1.00
	1TP3.0012	3 - 12 UN	3.2200	1.60	1.20	1.00
	1TP3.1208	3-1/8 - 8 UN	3.5000	1.60	1.20	1.00
	1TP3.2508	3-1/4 - 8 UN	3.5000	1.60	1.20	1.00