

# The Mx100/200 Readout System

-Follow these strips to build your Metlogix “Readout Model Number”.

## 1. Choose your Readout Model:



Mx100



Mx200

Model #: Mx1-

Mx2-

## 2. Choose your Encoder Interface.

-Select the code for the desired scale interface type from the diagram below and add it to your model number.



Type: 9 Pin TTL Dsub

Code: No Code Required

Model #: Mx2-



Type: Acurite 6 Pin Round

Code: -AR

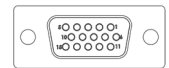
Model #: Mx1-AR



Type: Heidenhain 11 MicroAmp 9Pin

Code: -uA

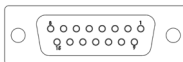
Model #: Mx2-uA



Type: Nikon 15 Pin HD Dsub

Code: -ND

Model #: Mx1-ND



Type: Heidenhain 1VPP 15Pin Dsub

Code: -1V

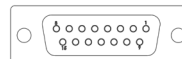
Model #: Mx2-1V



Type: RSF/Deltronic 7 Pin Round

Code: -DT

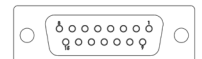
Model #: Mx1-DT



Type: AMO/LIDA 15 Pin Dsub

Code: -AM

Model #: Mx2-AM



Type: Mitutoyo 15Pin Dsub

Code: -MT

Model #: Mx1-MT

## 3. Choose your Axis Configuration.

-Add the required axes to the interface code to specify desired encoder axes support. \*Note, it is quite common for the Q axis rotary protractor axis to be a 9 Pin TTL connector. For this case the Q designator should be separated from XY by a “-”.

Axes: XY XYZ XYQ

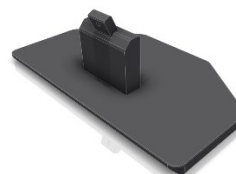
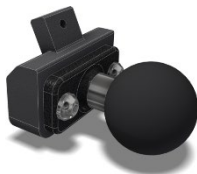
Model #: Mx2-1VXY Mx1-ARXYZ Mx2-uAXY-Q\*

## 4. Choose Sensor Option.

-The Mx200 is available with or without Optical Edge Detection support. When Optical Edge support is required the code “-OE” should be added to the model number next. When “OE” is chosen, (2) Optical Edge Fiber Optic Cables will also be provided with your system.

Model #: Mx2-1VXY-OE

## 5. Choose your Mounting Option.



Mount: OEM Arm Mount(4 Position)\*

1.5" RAM Ball

Desktop Stand(4 Position)\*

Code: -AM

-RM

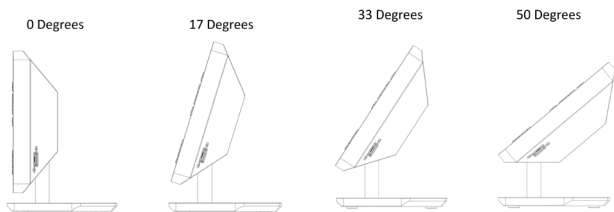
-DM

Model #: Mx2-1VXY-OE-AM

Mx1-MTXY-RM

Mx1-ARXYZ-DM

\*The -AM, and -DM options support mounting in one of four viewing angles. (2) blocks are supplied, each supporting 2 of the following angles;



### Example model numbers

### Description of configuration

Mx1-XY-DM

Mx100 Readout, TTL 9 Pin Dsub for X and Y, Desktop Mount

Mx2-1VXY-OE-AM

Mx200 Readout, HH 1 Volt PP 15 Pin for X and Y, Optical Edge, OEM Arm Mount

Mx2-MTXYQ-RM

Mx200 Readout, Mitutoyo 15 Pin XYQ, Ram Mount

Mx1-AMXYQ-AM

Mx100 Readout, AMO 15 Pin XYQ, OEM Arm Mount

Mx2-ARXY-NDZ-DM

Mx200 Readout, Acurite 6 Pin Round XY and Nikon Dsub Z, Desktop Mount

## Additional Accessories

2-Button Footswitch

Metlogix Part#: FS1



Fiber Optic Retrofit Adapters

Metlogix Part #: 10353 (Single Cable)

