

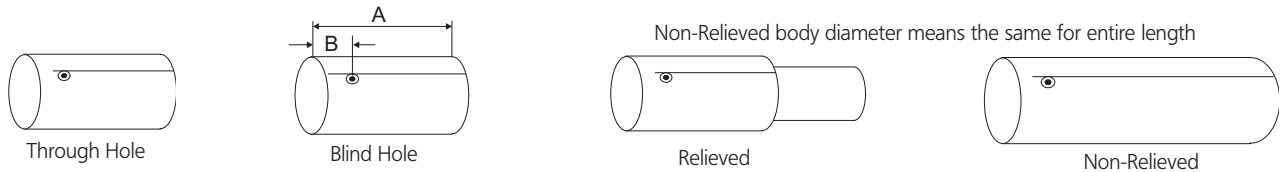
**Dimensionair® Air Gages**

**Worksheet for Ordering Air Plugs**

There are two basic styles of Air Plugs, Thru Hole and Blind Hole Styles. Dimension "B" refers to the dimension of the Jet Centerline to the Nose of the Air Plug. The overall dimension is indicated by Dimension "A". There is an option for Super Blind Plugs that further reduces Dimension "B", permitting checking closer to the bottom of the part.

If extra length is necessary and an extension or handle will not work, you can specify extra plug length in 1" /25mm increments. NON-Relieved should only be specified for valve bores where obstructions like lands could make it difficult to remove the tool.

When possible specify the Dimensionair model number you are ordering the tooling for.



Company \_\_\_\_\_ Contact: \_\_\_\_\_ Part Number: \_\_\_\_\_  
 Phone: \_\_\_\_\_ Fax: \_\_\_\_\_ Email: \_\_\_\_\_

**Required Information:**

Feature Size (shaft dia): \_\_\_\_\_  
 Size Tolerance: \_\_\_\_\_  
 Number of Jets\*: \_\_\_\_\_  
 Plug Style: Thru, Blind \_\_\_\_\_  
 Location Jets: \_\_\_\_\_  
 Extra Body length Req'd? \_\_\_\_\_  
 Extra length\* = \_\_\_\_\_  
 Quantity: \_\_\_\_\_  
 Overall Bore Length\*: \_\_\_\_\_  
 Dimensionair/Display to be used: \_\_\_\_\_  
 Part prints for other than non-standard plugs are required. \_\_\_\_\_

**Options for Air Plugs:**

Stop Collar: \_\_\_\_\_  
 OD Restrictions: \_\_\_\_\_  
 Special Plug Markings: \_\_\_\_\_  
 Extensions Required / length: \_\_\_\_\_  
 ISO Long Form Certification of Air Plug required? \_\_\_\_\_  
 Tooling Hose Required: \_\_\_\_\_  
 Handle Required: \_\_\_\_\_  
 Shut-off \_\_\_\_\_  
 Master required? \_\_\_\_\_  
 Nominal? \_\_\_\_\_  
 AMR Calibration kit required? \_\_\_\_\_  
 AFL-24 Oil/Water trap required? \_\_\_\_\_

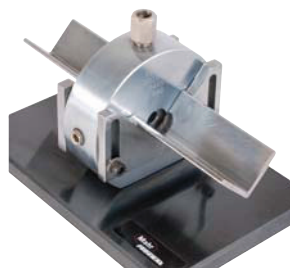
*\* 2 jet check size, ovality, taper, bellmouth; 3 jet check 3 point out of round; 4 jet Average Diameter, requires special Dimensionair; 6 jet Average 2 point and 3 point out of round, requires special Dimensionair.*

Technical Assistance at Mahr Federal:  
 Phone: 401-784-3100  
 Fax: 401-784-3246 Email: information@mahr.com

**Dimensionair® Air Gages**

**Worksheet for Ordering Air Rings**

Special care **MUST** be taken when preparing proposals for Air Rings. There are five basic styles of Air Rings. Centered jets, offset jets, shoulder type, counter bored type, and snout type. Air rings may be attached directly to the Dimensionair, or used with base and guide chutes that can only be provided at time of manufacture. Mahr Federal strongly recommends a drawing (CAD preferred) accompany this inquiry.



Company \_\_\_\_\_ Contact: \_\_\_\_\_ Part Number: \_\_\_\_\_  
 Phone: \_\_\_\_\_ Fax: \_\_\_\_\_ Email: \_\_\_\_\_

**Required Information:**

**Options for Air Plugs:**

Feature Size mm/inch): \_\_\_\_\_  
 Size Tolerance: \_\_\_\_\_  
 Number of Jets\*: \_\_\_\_\_  
 Air Ring Style:  
 • Center jets  
 • Offset jets  
 • Shoulder style  
 • Counter bored  
 • Snout  
 \_\_\_\_\_  
 Overall length of diameter: \_\_\_\_\_  
 Quantity: \_\_\_\_\_  
 Dimensionair/Display to be used: \_\_\_\_\_  
 Part prints for other than non-standard plugs are required. \_\_\_\_\_

OD Restrictions: \_\_\_\_\_  
 Special Plug Markings: \_\_\_\_\_  
 Base required: \_\_\_\_\_  
 Guide chutes required:  
 • Vee Style  
 • Tube Style  
 • Length of chute: 63mm/2.5" or 152mm/6"  
 \_\_\_\_\_  
 ISO Long Form Certification of Air Ring required? \_\_\_\_\_  
 Tooling Hose Required: \_\_\_\_\_  
 Shut-off \_\_\_\_\_  
 Master required? \_\_\_\_\_  
 Nominal? \_\_\_\_\_  
 AMR Calibration kit required? \_\_\_\_\_

Technical Assistance at Mahr Federal:  
 Phone: 401-784-3100  
 Fax: 401-784-3246 Email: information@mahr.com