

Dino-Lite

Digital Microscope



Redefine the microscope

www.dinolite.us

Dino-Lite

What is Dino-Lite?

Dino-Lite digital microscopes are a powerful and easy to use solution, designed to fit a wide range of applications, including but not limited to: inspection, testing, and documentation.

Users can view a live image displayed directly to a television, monitor or mobile screen.

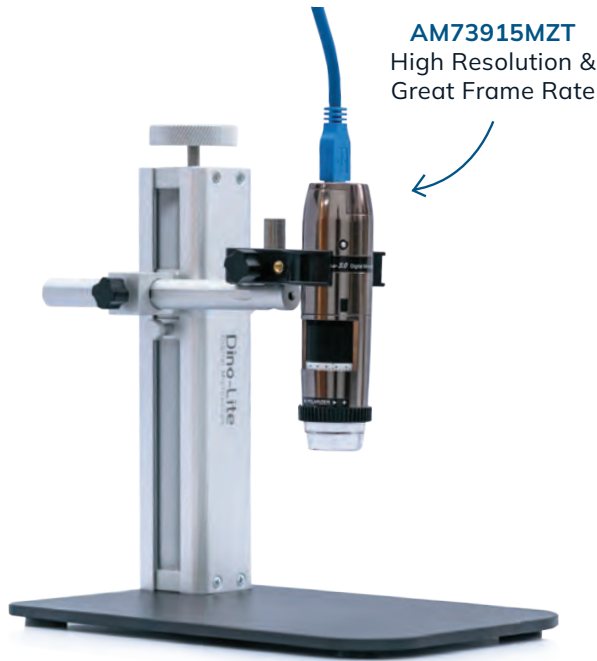
Dino-Lite offers a diverse, ready-to-use selection of microscopes as well as the option to customize a solution to fit your needs.



All Models Include

- 2-YEAR WARRANTY
- FREE TECH SUPPORT

Popular Products



AM73915MZT
High Resolution &
Great Frame Rate

RK-10A
Designed for Precision



AF4915ZT
USB &
Wireless Ready

RK-06A
Designed for Versatility

Visit us online at dinolite.us

- Product Demos
- Training Videos
- Tech Support
- Company Information
- Software Updates
- Specification Information
- ...and more!



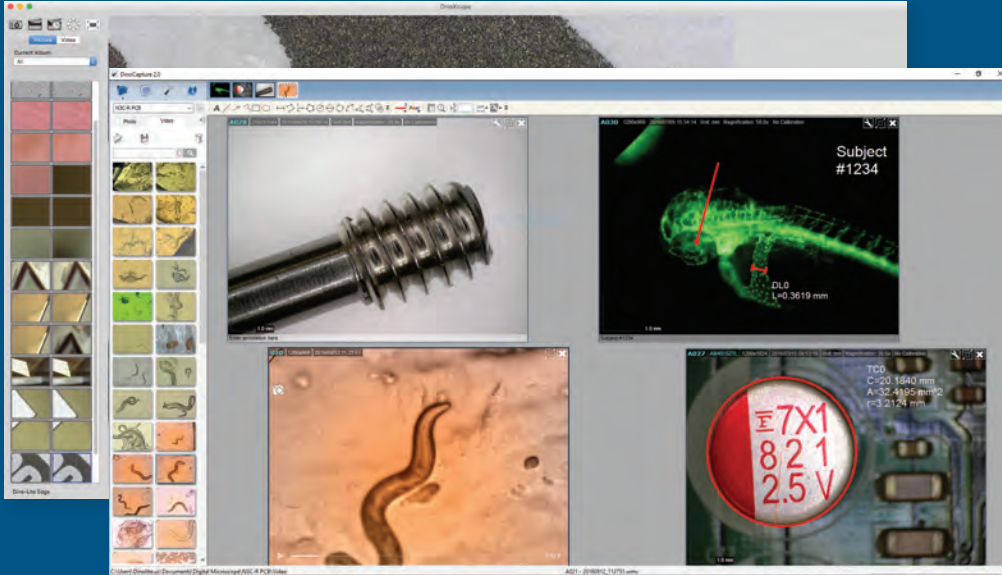
www.dinolite.us

Dino-Lite

Key Features

Capture Images & Video

Easily save images, videos, and time-lapse videos with our USB models using the included license-free software



Preview Window Tools

- Snapshot
- Video Recorder
- Time-Lapse Video
- EDR-Extended Dynamic Range*
- EDOF-Extended Depth of Field*
- Microtouch*
- White Balance*
- Auto Exposure Setting
- LED Control*
- Flexible LED Control*
- Camera Adjustment Setting
- Maximize Window
- Close Window

*Available for select Dino-Lite models only.

Adjust Image Settings

Use the software settings panel to adjust lighting, colors, brightness, contrast, and other settings.

Magnification Ranges

Our standard magnification range is 10x-220x. Select models go up to 900x.

Housing Types

Our ABS and medical-grade plastic bodies are reliable and strong. For enhanced protection, the metal body consists of aerospace grade machine tooled aluminum.

Lighting Control

Many Dino-Lite models have a built-in adjustable polarizer for reducing glare. FLC, eFLC, diffuser caps, lighting accessories, and exposure adjustments also help to achieve optimal results.

Measurement & Annotation

Most models have measurement capability for lines, circles, angles, and more. Snap measurements to any edge for ease of use. You can also add annotations for easy file organization. Models with AMR maintain the scale automatically.

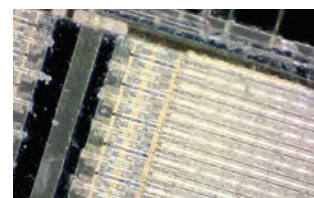
Interchangeable cap design

Most Edge series models have a removable cap design and include a set of alternate caps. Each cap has a different lighting and focus effect for increased versatility.

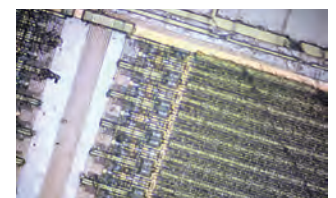


Coaxial Lighting

Some models include a coaxial lighting mode that can reveal hidden details not visible otherwise.



Normal Lighting



Axial Lighting

Dino-Lite

Specialized Solutions

DinoConnect App with Wi-Fi Adapters

Dino-Lite CONNECT Wireless adapters stream the live view from a compatible Dino-Lite to smartphones, tablets, and Wi-Fi enabled computers. It creates a powerful, portable solution for use anywhere. DinoCapture 2.0, or DinoConnect on iOS/Android, even allow you to take measurements on the go.



HDMI



RCA



VGA

Dino-Lite Direct (TV)

Connect directly to a TV display with either RCA, VGA, or HDMI. Plug in your display and power on, no software needed. These are great for applications that only require viewing such as assembly or dissection or when a computer is not available such as security restricted areas.

USB 3.0 Edge Series

USB 3.0 Models provide the highest video quality of our microscopes.



Dino-Eye Camera

Dino-Eye cameras connect your existing microscope to Dino-Lite software. This enables collaboration, documentation, measurements, and more. Simply insert the camera in the eyepiece or C-mount, and connect via USB. Dino-Eye cameras are compatible with 23mm, 30mm, and 30.5mm eyepieces in addition to C-Mount threaded ports.

Special Lighting - IR/UV/Fluorescence

Models are available with fluorescence, UV, and IR. A small sample is listed here. Contact us for more information.

Series	Excitation Wavelength	Emission Filter	Series	Excitation Wavelength	Emission Filter
FUW (UV)	375nm	N/A	YFGW	525nm	570nm
GFBW	480nm	510nm	DFRW	620nm	650nm
GRFBY	480/575	510/610	FJT (IR)	940nm	N/A



www.dinolite.us

Dino-Lite Accessories

Our collection of stands and accessories are designed to allow Dino-Lite to meet the needs of every application. From focus adjustment stands, to external lighting, and specimen stages, this page shows just a small sample of the solutions we offer.



RK-10A - \$299
Universal
Fine-Focus Stand



RK-06A - \$199
Tall Stand with
Focus Dial



RK-04 - \$99
Small Stand with
Focus Adjustment



RK-02 - \$129
Sturdy Articulating
Desk Clamp



RK-10-VX - \$39
Vertical Extension



RK-06-PL - \$35
Extension Pole
for RK-06A*



HD-M1 - \$69
Metal Screw Grip
Holster



MSA3M - \$49
Metal Secure
Fitted Holster



MSAK843 - \$69
Multifunction
Diffusion Stage



WF-20 - \$269
Wireless Adapter†



MS17TSW-F1 - \$99
Foot Pedal
Controller



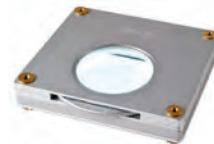
KM-01 - \$399
Knob Motor*



N3C-R - \$69
Ring Light
for Edge Series



BL-CDW - \$369
Bright Field & Dark Field
Backlight Stage



BL-ZW1 - \$299
Polarized Backlight



MSAK813 - \$229
Flexible Adjustable Power
LED Attachment*



MS15X-S2 - \$199
XY Rotation Stage
for MS35B/RK-06A/RK-10A



MS62W1 - \$149
Rolling Stand



MS53BA3 - \$369
Vertical + Horizontal Mount
with 25 lb. Industrial Base



**VISION SYSTEM M1 -
Starting at \$895**
Precision Motorized
XYZ Stage

† Requires Wireless Ready "Edge" series microscope

* Additional accessories required.

While it may seem like Dino-Lite is an entirely different type of device compared to traditional microscopes, they actually have a lot in common.



10x



220x

Magnification

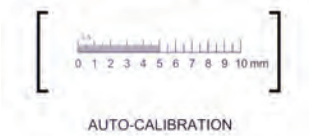
Dino-Lite microscopes offer the same magnification potential as traditional microscopes, however, it's done with a single compact lens. With many magnification ranges to choose from, finding the perfect Dino-Lite to fit your needs is easy.

Working Distance

The Working Distance (WD) is the distance between the end of the Dino-Lite and the object being viewed. The most versatile models have as little as zero working distance at certain magnifications while others are designed for applications that require more space.



CALIBRATION TARGET



20x



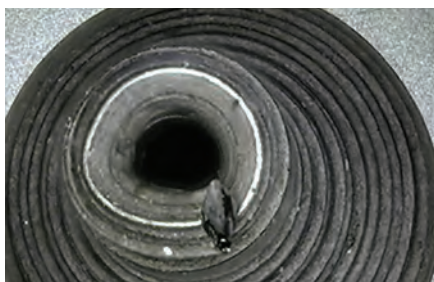
220x

Field of View (FOV)

Field of view (FOV) is the observable area that is seen by the Dino-Lite's camera. The FOV cannot be increased or decreased for a given magnification. Those two values are proportional to each other.

Depth of field (DOF)

Depth of Field (DOF) is the distance between the nearest and the farthest objects in an image that are in clear focus at the same time. As magnification increases, depth of field will decrease, this can be a challenge for live images and photography with traditional microscopes.



EDOF

Extended depth of field (EDOF)

EDOF automatically captures, stacks, and combines multiple images at different focal planes to produce one clear image. Non-flat objects generally require more DOF compared to flat objects, and this is where EDOF is most helpful.

Product	MSRP	Resolution	Magnification	Interface	Measurement	Polarizer	Metal Housing	FLC	AMR	EDOF*	Working Distance	Special Features*
AF3113T	\$299	640x480	10x-50x, 200x	Modular	■						Standard	
AM4111T	\$329	1280x1024	10x-50x, 230x	USB 2.0							Standard	
AM4113ZT	\$499	1280x1024	10x-50x, 230x	USB 2.0	■	■					Standard	
AM4113ZTL	\$549	1280x1024	10x-90x	USB 2.0	■	■					Long	

Dino-Lite Digital Microscope - Professional Series

Product	MSRP	Resolution	Magnification	Interface	Measurement	Polarizer	Metal Housing	FLC	AMR	EDOF*	Working Distance	Special Features*
Dino-Lite Edge (USB)												
AF4115ZT	\$629	1280x1024	10x-220x	Modular	■	■		■			Standard	
AF4515T-FUW	\$695	1280x1024	10x-220x	Modular	■			■	■		Standard	UV
AF4915ZT	\$899	1280x1024	20x-220x	Modular	■	■		■	■	■	Standard	
AF4915ZTL	\$929	1280x1024	10x-140x	Modular	■	■		■	■	■	Long	
AM4517MZT	\$949	1280x960	20x-220x	USB 2.0	■	■	■	■	■		Standard	Edge+
AM4917MZT	\$1,199	1280x960	20x-220x	USB 2.0	■	■	■	■	■	■	Standard	Edge+
AM4917MZTL	\$1,229	1280x960	10x-140x	USB 2.0	■	■	■	■	■	■	Long	Edge+
AM73515MZT	\$1,169	2560x1920	10x-220x	USB 3.0	■	■	■	■	■		Standard	
AM73515MZTL	\$1,199	2560x1920	5x-140x	USB 3.0	■	■	■	■	■		Long	
AM73115MTF	\$1,129	2560x1920	10x-70x	USB 3.0	■		■	■			Far	
AM73915MZT	\$1,469	2560x1920	10x-220x	USB 3.0	■	■	■	■	■	■	Standard	
AM73915MZTL	\$1,499	2560x1920	5x-140x	USB 3.0	■	■	■	■	■	■	Long	
AM4517MT8A	\$1,095	1280x960	700x-900x	USB 2.0	■		■	■	■		Other	Coaxial
AM73515MT8A	\$1,469	2560x1920	700x-900x	USB 3.0	■		■	■	■		Other	Coaxial
Dino-Lite Edge (TV)												
AM5212NZT	\$529	960x480	10x-220x	TV/RCA		■					Standard	
AM5216ZT	\$669	1280x720	10x-220x	VGA		■					Standard	
AM5216ZTL	\$699	1280x720	5x-140x	VGA		■					Long	
AM5216ZTF	\$699	1280x720	1x-70x	VGA		■					Far	
AM5218MZT	\$949	1280x720	10x-220x	HDMI		■	■				Standard	
AM5218MZTL	\$969	1280x720	5x-140x	HDMI		■	■				Long	
AM5218MZTF	\$1,049	1280x720	10x-70x	HDMI		■	■				Far	

Dino-Lite Wireless Digital Microscopes

Product	MSRP	Resolution	Magnification	Interface	Measurement	Polarizer	Metal Housing	FLC	AMR	EDOF*	Working Distance	Special Features*
WF3113T	\$565	640x480	10x-50x, 200x	Modular	■						Standard	Wireless
WF4115ZT	\$895	1280x1024	20x-220x	Modular	■	■		■			Standard	Wireless
WF4915ZT	\$1,165	1280x1024	20x-220x	Modular	■	■		■	■	■	Standard	Wireless
WF4915ZTL	\$1,195	1280x1024	10x-140x	Modular	■	■		■	■	■	Long	Wireless
WF4115ZT (W)	\$899	1280x1024	20x-220x	Modular	■	■		■			Standard	Wireless
WF4115ZTL (W)	\$925	1280x1024	10x-140x	Modular	■	■		■			Long	Wireless

Dino-Lite Eyepiece Camera

Product	MSRP	Resolution	Base Magnification	Interface	Aperture Diameter
AM4025X	\$429	1280x1024	20x	USB 2.0	23mm, 30mm, 30.5mm
AM7025X	\$649	2592x1944	20x	USB 2.0	23mm, 30mm, 30.5mm

Accessories

Product	MSRP	Description
RK-06A	\$199	General Purpose Tabletop Stand
RK-10A	\$299	Precision Tabletop Stand with Quick Release & Fine Adjustment
WF-20	\$269	Wireless Adapter for "AF" and "WF" Prefix Models

*EDOF features are available only on Windows.

Modular = USB Connection and WF-20 Compatible

Additional products and technical specification sheets available



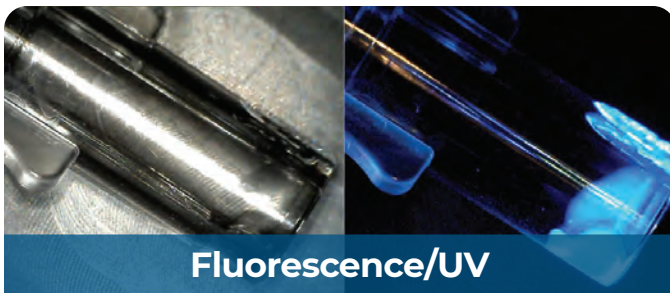
Industrial

- Quality Control
- Automotive
- Textile & Composite
- Nonwovens
- Testing
- Manufacturing
- Machine Vision



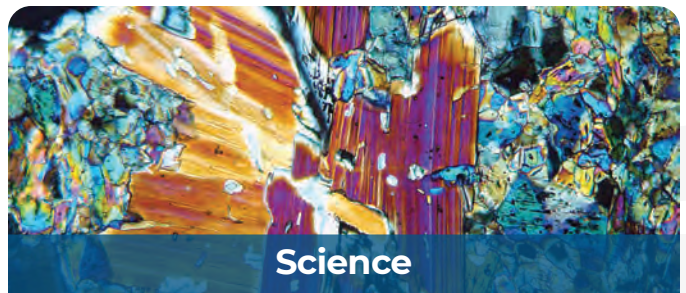
PCB & IC

- Component Inspection
- Soldering
- Quality Control
- Failure Analysis
- BGA Inspection
- Counterfeit PCB/IC
- Silicon Wafer



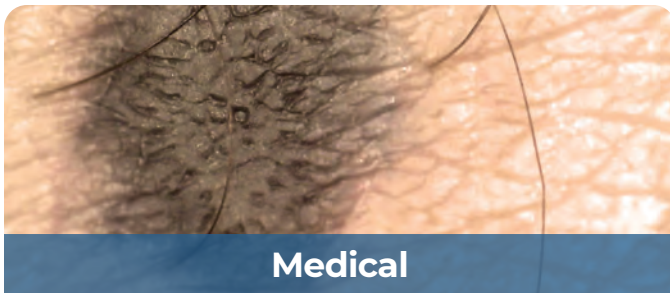
Fluorescence/UV

- Zebrafish
- Genetics
- GFP/RFP
- Counterfeit Detection
- Forensics
- Custom Wavelengths



Science

- Geology
- Archaeology
- Paleontology
- Plants
- Insects
- Mineralogy



Medical

- Veterinary
- General Medical
- Dermatology
- Eye, Ear, Nose, Throat



Education/Academics

- Teaching
- Research Lab
- Field Research



Laboratory

- Life Science
- Genetics
- Zebrafish
- Slides



Jewelry/Collectibles

- Jewelry
- Coin & Numismatic
- Antiques
- Hobby